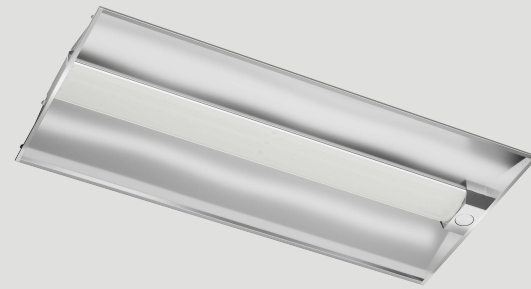


Part #	Prepared By
Project	Notes
Type	
Date	



MOT vHealth® Medical Overbed Troffer

Volumetric Recessed Luminaire 1950-11750 Lumens



Description

vHealth® MOT luminaires are made with cold rolled, 22 gauge steel. Luminaire body finish is high reflectance baked white enamel, with matte white reflectors. Wiring knockouts are provided on the back of housing. Center diffuser snaps into place; no tools are required for removal. This specification grade fixture provides smooth and uniform ambient lighting for patient rooms in hospitals with recessed ceilings. Reflected light from matte surfaces provide a softened appearance to modern healthcare environments.

Warranty & Notes

ELECTRICAL SYSTEM

- 1950 - 11750 lumens
- 2700K - 5000K CCT (BioSync® White tuning LED available)
- 80 CRI (+90 CRI optional)
- Standard 0-10V dimming driver, optional drivers available
- 120V-277V Input Volts
- Minimum 50,000 hour lifetime at L70

OPTICS & OPTIONS

- Frosted acrylic diffuser spreads light to allow for a smooth even glow
- Optional reading light for patient rooms
- Compatible with Curbell Pillow speakers
- Easy to clean
- 7 Watt 500 Lumens Reading light

FRAME & MOUNTING

- 22 gauge cold rolled steel, sized for standard 1" T-bar grid mounting
- Multiple 7/8" knockouts and standard access cover allow for easy wiring and installation

Listings

- ETL certified to UL 1598
- Suitable for dry and damp locations
- Buy American Act (BAA)

Warranty & Notes

- 5-year limited warranty on LED module and driver
- Insulation cannot be in direct contact with luminaire



- **OPTIONAL Curbell module allows for seamless integration with Curbell pillow top control**

Ordering Information

EXAMPLE: MOT-22L-Y33W-DMV-40K-RL

MOT		-		-		-		-		-	
-----	--	---	--	---	--	---	--	---	--	---	--

Series	Size	Wattage	Driver	Kelvin (CCT)	Finish	Options*	Accessories	
MOT	14L - 12"W X 48"L	Y15W - 1950 Lumens Y20W - 2600 Lumens Y25W - 3250 Lumens Y33W - 4290 Lumens BC35W ¹ - 4000 Lumens	DMV 0-10V Dimming D1MV 0-10V Dimming Dim to 1% G120 ELV/Triac Dimming at 120V only	Blank ¹ - BioSync® White 2700K to 5000K (Only for BCxxW options) 80CRI 30K - 3000K 35K - 3500K 40K - 4000K 50K - 5000K 90CRI 930K - 3000K 935K - 3500K 940K - 4000K	BLANK - Antimicrobial Paint White Finish AMBK - Antimicrobial Paint Black Finish AMxx - Antimicrobial Paint Custom Finish	RL PS WP5W WP6W EM14 EM20	FIK1X4 1X4 Frame-in-kit FIK2X2 2X2 Frame-in-kit FIK2X4 2X4 Frame-in-kit SHMOT1X4 1X4 Shroud kit SHMOT2X2 2X2 Shroud kit SHMOT2X4 2X4 Shroud kit	
	22L - 24"W X 24"L	Y15W - 1950 Lumens Y20W - 2600 Lumens Y25W - 3250 Lumens Y38W - 4900 Lumens Y44W - 5900 Lumens BC35W ¹ - 4000 Lumens						
	24L - 24"W X 48"L	Y20W - 2800 Lumens Y25W - 3500 Lumens Y30W - 4200 Lumens Y35W - 4900 Lumens Y40W - 5600 Lumens Y45W - 6300 Lumens Y54W - 7560 Lumens Y88W - 11750 Lumens BC70W ¹ - 8000 Lumens						

*Options Notes

RL - 7W Reading Light 500 lumens (integrated)
PS - Integrated controller compatible with CURBELL Pillow Speakers
WP5W - 6ft. 5 wire 18 gauge whip

WP6W - 6ft. 6 wire 18 gauge whip (dimming EM)
EM14 - 14W Emergency battery backup
EM20 - 20W Emergency battery backup (remote only)

*Notes

¹ - BioSync® White Tuning 2700K - 5000K

Vantage reserves the right to change components, finishes or design details in any manner which does not alter the installed appearance or reduce performance and intended function.

vHealth® is a registered trademark of Lexington Lighting Group, LLC dba Vantage Lighting

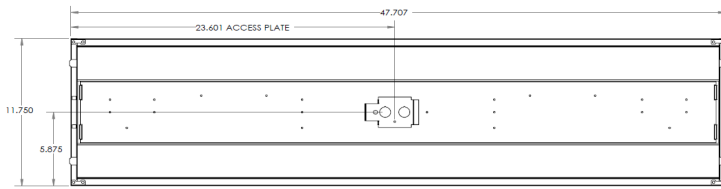
MOT vHealth® Medical Overbed Troffer

Volumetric Recessed Luminaire 1950-11750 Lumens

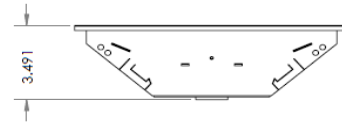
Dimensional Data

Back

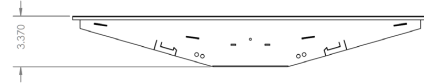
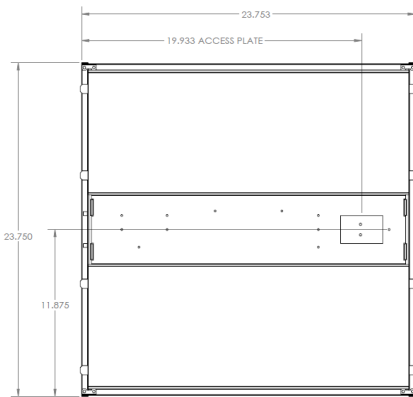
1x4



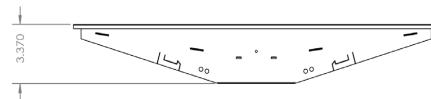
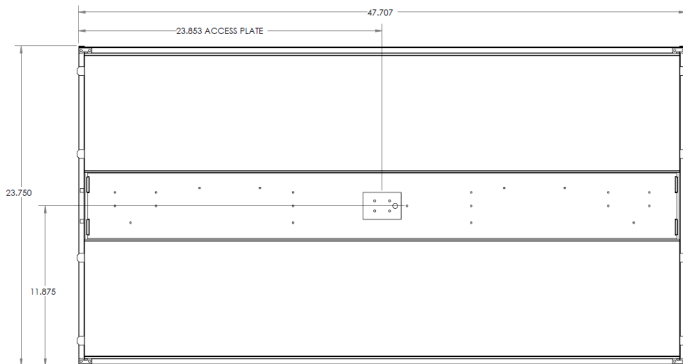
End



2x2



2x4



Vantage reserves the right to change components, finishes or design details in any manner which does not alter the installed appearance or reduce performance and intended function.
vHealth® is a registered trademark of Lexington Lighting Group, LLC dba Vantage Lighting

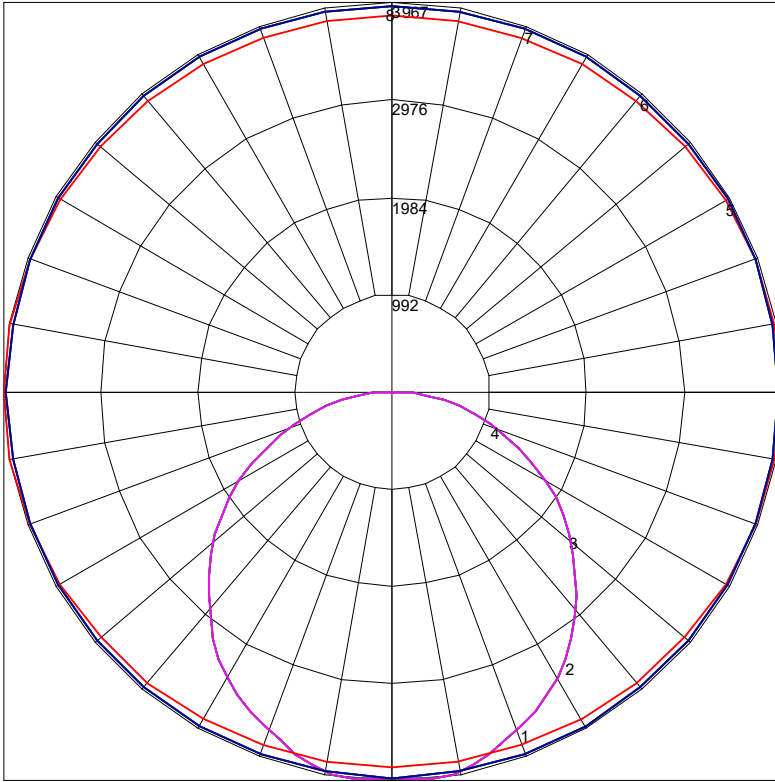
Volumetric Recessed Luminaire 1950-11750 Lumens

Photometrics

IES INDOOR REPORT

PHOTOMETRIC FILENAME : MOT24LY88WDMV50K.IES

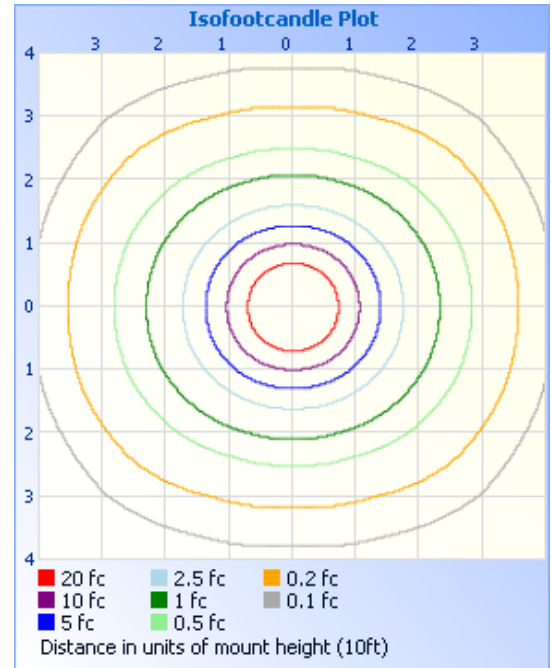
POLAR GRAPH



- Maximum Candela = 3967.4 Located At Horizontal Angle = 0, Vertical Angle = 6
- # 1 - Vertical Plane Through Horizontal Angles (0 - 180) (Through Max. Cd.)
- # 2 - Vertical Plane Through Horizontal Angles (0 - 180)
- # 3 - Vertical Plane Through Horizontal Angles (0 - 180)
- # 4 - Vertical Plane Through Horizontal Angles (0 - 180)
- # 5 - Horizontal Cone Through Vertical Angle (6) (Through Max. Cd.)
- # 6 - Horizontal Cone Through Vertical Angle (0)
- # 7 - Horizontal Cone Through Vertical Angle (0)
- # 8 - Horizontal Cone Through Vertical Angle (0)

Illuminance at a Distance			
	Center Beam fc	Beam Width	
1.7ft	1,664 fc	4.0 ft	4.9 ft
3.3ft	442 fc	7.7 ft	9.5 ft
5.0ft	192 fc	11.7 ft	14.3 ft
6.7ft	107 fc	15.6 ft	19.2 ft
8.3ft	69.8 fc	19.4 ft	23.8 ft
10.0ft	48.1 fc	23.3 ft	28.7 ft

■ Vert. Spread: 98.8°
■ Horiz. Spread: 110.2°



Coefficients Of Utilization - Zonal Cavity Method

Effective Floor Cavity Reflectance: 20%

RCC %:	80		70				50				30				10				0
RW %:	70	50	30	0	70	50	30	0	50	30	20	50	30	20	50	30	20	0	
RCR: 0	1.19	1.19	1.19	1.19	1.16	1.16	1.16	1.00	1.11	1.11	1.11	1.06	1.06	1.06	1.02	1.02	1.02	1.00	
1	1.09	1.05	1.00	.97	1.06	1.02	.98	.85	.98	.95	.92	.94	.92	.89	.91	.88	.87	.85	
2	.99	.91	.85	.79	.97	.89	.83	.72	.86	.81	.76	.83	.78	.75	.80	.76	.73	.71	
3	.91	.80	.72	.66	.88	.79	.71	.62	.76	.70	.64	.73	.68	.63	.71	.66	.62	.60	
4	.83	.71	.63	.56	.81	.70	.62	.53	.68	.61	.55	.65	.59	.54	.63	.58	.54	.51	
5	.77	.64	.55	.49	.75	.63	.55	.46	.61	.53	.48	.59	.52	.47	.57	.51	.47	.45	
6	.71	.58	.49	.42	.69	.57	.48	.41	.55	.47	.42	.53	.47	.42	.52	.46	.41	.39	
7	.66	.52	.44	.38	.64	.52	.43	.37	.50	.43	.37	.49	.42	.37	.47	.41	.37	.35	
8	.61	.48	.39	.34	.60	.47	.39	.33	.46	.39	.33	.45	.38	.33	.43	.37	.33	.31	
9	.57	.44	.36	.30	.56	.43	.36	.30	.42	.35	.30	.41	.35	.30	.40	.34	.30	.28	
10	.54	.41	.33	.28	.52	.40	.33	.27	.39	.32	.27	.38	.32	.27	.37	.31	.27	.25	

Zonal Lumen Summary

Zone	Lumens	%Fixt
0-20	1161.08	9.90
0-30	3000.49	25.50
0-40	4702.00	40.00
0-60	8702.69	74.00
0-80	11134.46	94.70
0-90	11747.93	100.00
10-90	11446.93	97.40
20-40	3540.93	30.10
20-50	5325.16	45.30
40-70	5382.74	45.80
60-80	2431.77	20.70
70-80	1049.72	8.90
80-90	613.47	5.20
90-110	5.19	0.00
90-120	5.19	0.00
90-130	5.19	0.00
90-150	5.19	0.00
90-180	5.19	0.00
110-180	0.00	0.00
0-180	11753.12	100.00

Vantage reserves the right to change components, finishes or design details in any manner which does not alter the installed appearance or reduce performance and intended function. vHealth® is a registered trademark of Lexington Lighting Group, LLC dba Vantage Lighting