

Part #	Prepared By
Project	Notes
Type	
Date	



# OBW vHealth® Overbed Wall LED Light

LED Linear Architectural Luminaire 2000 - 8000 Lumens



## Description

The vHealth® OBW luminaire is a wall mounted luminaire that provides a bold architectural look to provide comfortable, bright general lighting. Acrylic frosted lens hides the LED arrays and provides excellent glare control. The luminaire comes with an optional three way pull chain for uplight, downlight, or up and down light operation. Easy to install.

## Warranty & Notes

### ELECTRICAL SYSTEM

- System delivered lumen : 2000 - 8000 lumens
- Up Light only, Down Light only or Up / Down Light operation
- 80 CRI , 90+ CRI available
- Standard 0-10V dimming driver
- 120V-277V Input Volts
- Minimum 50,000 hour lifetime at L70
- Optional CURBELL pillow speaker interface
- Ambient Temperature Temperature:-20 ~ 40 °C( -22 °F to +104°F)
- Surge protector
- Power factor: >0.9

### FRAME & MOUNTING

- Marine grade aluminum with white finish, Other colors optional
- White painted parts are treated with a five-stage phosphate bonding process and finished with high reflectance baked enamel.
- Acrylic translucent diffuser is snapped into housing.
- White anti-microbial paint standard
- Easy to clean

## Warranty & Notes

- 5-year limited warranty on LED module and driver

### OPTICS & OPTIONS

- Acrylic translucent diffuser
- Emergency battery backup
- Sensor



## Ordering Information

EXAMPLE: OBW-48L-60W-DMV

OBW		-		-		-		-		-	
Series	Mounting	Size	Wattage	Driver	Kelvin (CCT)	Finish	Options*	Accessories*			
OBW	Blank - Wall Mount	24L - 24"	20W - 2000 Lumens 40W - 4000 Lumens	DMV - 0-10V Dimming D1MV - 0-10V Dimming <1% G120 -TRIAC dimming	80CRI	BLANK - Antimicrobial Paint White  AMxx - Antimicrobial Custom Color	EM  PS PC	SS			
		36L - 36"	20W - 2000 Lumens 40W - 4000 Lumens 60W - 6000 Lumens		30K - 3000K 35K - 3500K 40K - 4000K						
		48L - 48"	40W - 4000 Lumens 60W - 6000 Lumens 80W - 8000 Lumens BC35W - 4000 Lumens BC70W - 8000 Lumens		90+ CRI  930K - 3000K 935K - 3500K 940K - 4000K						

### \*Notes

24L - Max 4000lms

36L - Max 6000lms

PC - Optional Pull Chain operation

PS - Compatible with CURBELL Pillow Top Control

EM20 - Emergency battery back-up 20w (remote)

SS - Sensor.

BCxxW - BioSync(R) White color tuning 2700K - 5000K

Vantage reserves the right to change components, finishes or design details in any manner which does not alter the installed appearance or reduce performance and intended function.

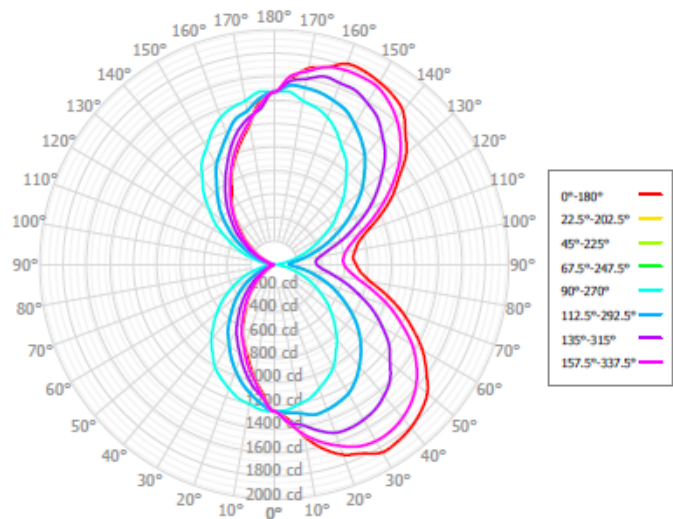
vHealth® is a registered trademark of Lexington Lighting Group, LLC dba Vantage Lighting

# OBW vHealth® Overbed Wall LED Light

LED Linear Architectural Luminaire 2000-8000 Lumens

## Photometric

Luminous Intensity Distribution Curve



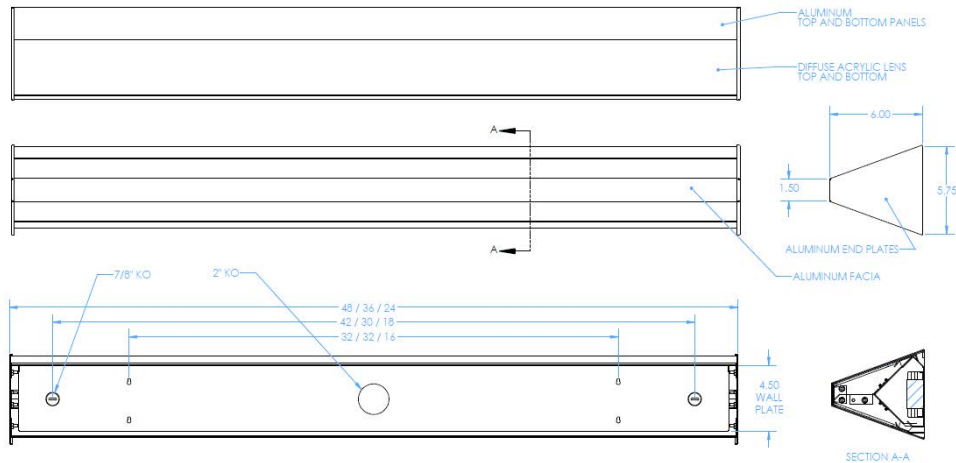
Performance Data Table

### Static White

size	lumen level	delivered lumens	watts	efficacy
24L	2000	2083	18.0	115.7
	4000	4102	33.2	123.6
36L	2000	2086	17.8	117.2
	4000	4149	32.6	127.3
	6000	6091	47.2	129.1
48L	2000	2080	17.6	118.2
	4000	4166	32.2	129.4
	6000	6148	46.4	132.5
	8000	8082	63.0	128.3

### BioSync Tunable White

size	lumen level	delivered lumens (3500K)	watts	efficacy
24L	2000	1944	17.0	114.3
	4000	3938	34.4	114.5
36L	2000	2019	17.0	118.7
	4000	4012	34.4	116.6
	6000	6028	51.8	116.4
48L	2000	2092	17.0	123.1
	4000	4087	34.4	118.8
	6000	6081	51.8	117.4
	8000	8076	69.6	116.0



Vantage reserves the right to change components, finishes or design details in any manner which does not alter the installed appearance or reduce performance and intended function.  
vHealth® is a registered trademark of Lexington Lighting Group, LLC dba Vantage Lighting